



Installation Manual

TWM Performance

S60/V70 & S60R/V70R

Base Bushings

Begin the installation by parking on a flat surface, as you will have to engage and disengage the hand brake and shift from gears to neutral. If you cannot do so and are obliged to install the short shifter on a slightly inclined surface, place wooden blocks in front or behind the wheels to prevent the car from moving while you're working.

Please read this installation manual completely before installing the product.

This manual is available for download in color at www.twmperformance.com.

Estimated Installation Time: 40 minutes

Tools required:

- Ratchet
- Ratchet extension
- 10 mm socket
- Two (2) flat head screwdrivers
- Torx T-25 screwdriver



This manual is available for download in color at : www.twmperformance.com



1. Remove the shift knob by pushing it down and rotating counter clockwise. Put it aside for re-installation later.



2. Open the cup holder compartment.



3. Pull up on the silver portion of the center console. The back part will unclip first, then you can work your way underneath the console to unclip the front.





4. Unclip the space ball at front by pulling up. Press the small tab at the rear to unclip the rear of the space ball (if equipped).

*2005 V70R shown



5. Open the storage compartment between the front seats and take out the rubber mat at the bottom.

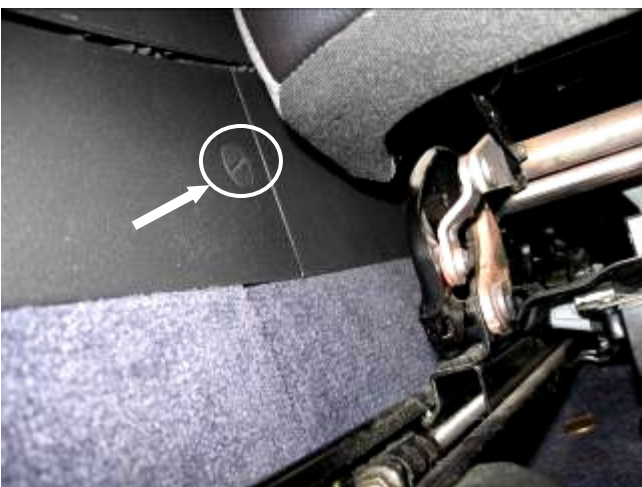


6. Unscrew the two (2) Torx screws at the bottom using a T-25 screwdriver.





7. Unscrew the two (2) Torx screws at the front of the console, using a T-25 screwdriver.



8. Locate the slotted caps on both sides of the console. You will have to move the seats all the way back. Use a quarter to rotate it 90° counter clockwise.



9. Unclip the foot well vents on both sides of the center console.





10. Remove the plastic trims on both sides of the console, by pulling back and out.



11. Unclip the leather trim surrounding the e-brake.



12. Pull the trim up and over the e-brake.





13. Pull up the rear of the center console. This will make the next steps much easier. Be careful not to scratch the radio layout.



14. Using a flat head screwdriver, pry out the plastic cover at the rear of the console.



15. Using two screwdrivers, pry out the plastic housing behind the cover unclipped at step 14. This will free both plastic components.



16. Unclip the black circular wire by pulling it out of its holder.



17. Unclip the grey harness by prying it back slightly, and pushing up.



18. Unclip the two parts of the grey harness by pressing down on the tab at the top.



19. You can now remove the center console.



20. Unclip the grey harness above the rear left base screw. This wire controls the reverse lockout solenoid (if equipped).



21. Unscrew the four (4) base bolts using a ratchet, a ratchet extension and a 10 mm socket.





22. Using a flat head screwdriver, pry the metal sleeve out of the rubber bushings.



23. Using a flat head screwdriver, push out the rubber bushings.



24. Slide the TWM base bushings under the stock shifter.





25. Tighten down the TWM assembly with the four (4) included washers and the four (4) stock bolts using a 10 mm socket and a ratchet.



26. Re-install everything by reversing steps 1 to 20.

Thank you, for choosing

TWM PERFORMANCE
COM



This manual is available for download in color at : www.twmperformance.com

Legal Disclaimer

TWM Performance is not responsible for the misuse, incorrect installation, or failure of any product we sell.

Under no circumstances, including but not limited to negligence, will TWM Performance be liable for special or consequential damages that result from the use or inability to use our products. TWM Performance does not assume responsibility for any damage to the user, passenger or vehicle resulting from the operation of a TWM Performance product.

TO PROTECT USERS FROM INJURY OR DEATH. THE USER ASSUMES ALL RISKS. Autocrossing, track events, and high speed driving are all dangerous activities - always drive responsibly and safely.

Warranty

Installation of some TWM Performance products may or may not void factory warranties. Always keep OEM equipment that has been replaced in case work is required at the dealer or the vehicle is sold.

This warranty covers the **original purchasing consumer**. This warranty is limited to repair or replacement by TWM Performance of any TWM Performance product that fails because of a defect in materials or workmanship.

Warranty does not cover the following:

- Products that have been modified incorrectly or incorrectly installed or misused.
- Damage incurred to related vehicle components
- Shipping costs for replacements
- Mounting hardware and bearings
- Regular day to day wear on vehicle
- Installation costs and vehicle down time



This manual is available for download in color at : www.twmperformance.com